

HIGHLIGHTS

FIRENZE

GOLD PROJECT

Outcropping Bonanza Grade Epithermal Veins With No Modern Exploration

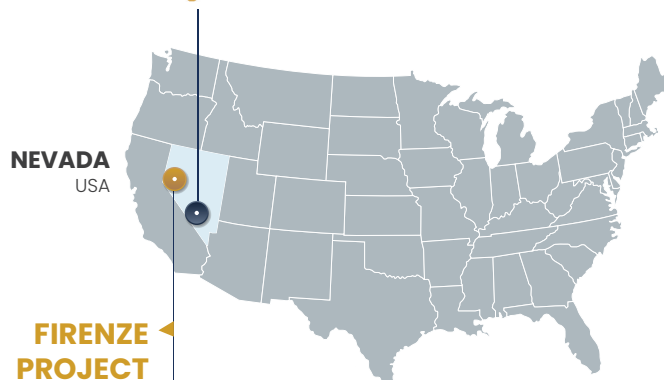
O R O G E N
orogenroyalties.com

THE OPPORTUNITY

- Undrilled bonanza grade vein system released in Dec 2022 from over 40 years of WSA protection
- Outcropping banded quartz-adularia epithermal veins up to 1.5 metres wide over 1.5 square-kilometres
- Grab sample highlights of up to 43.9 g/t gold with 534 g/t silver and 22.5 g/t gold with 1825 g/t silver
- Alteration and gold mineralization continue up to the alluvium contact
- Alteration vectors towards a blind untested structural zone under shallow alluvial cover to the east
- Prospective for both bulk-tonnage and high-grade vein hosted gold mineralization

EXPANDED SILICON PROJECT

1% NSR with AngloGold Ashanti



NEVADA
USA

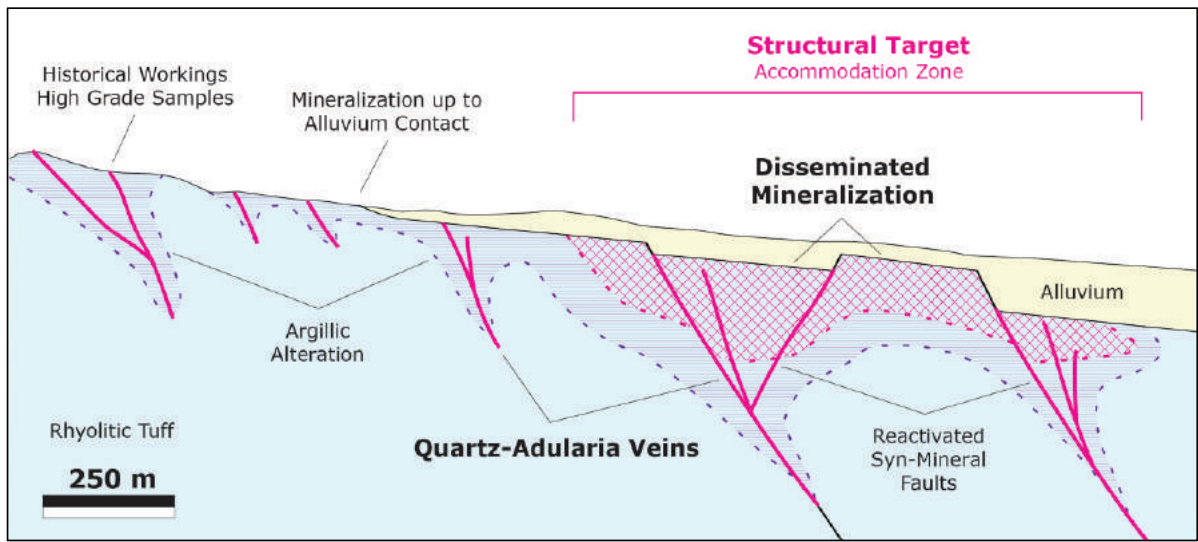
FIRENZE PROJECT

In Nevada, USA
170 km east of Reno. Recently released from WSA by US Congress after over forty years .

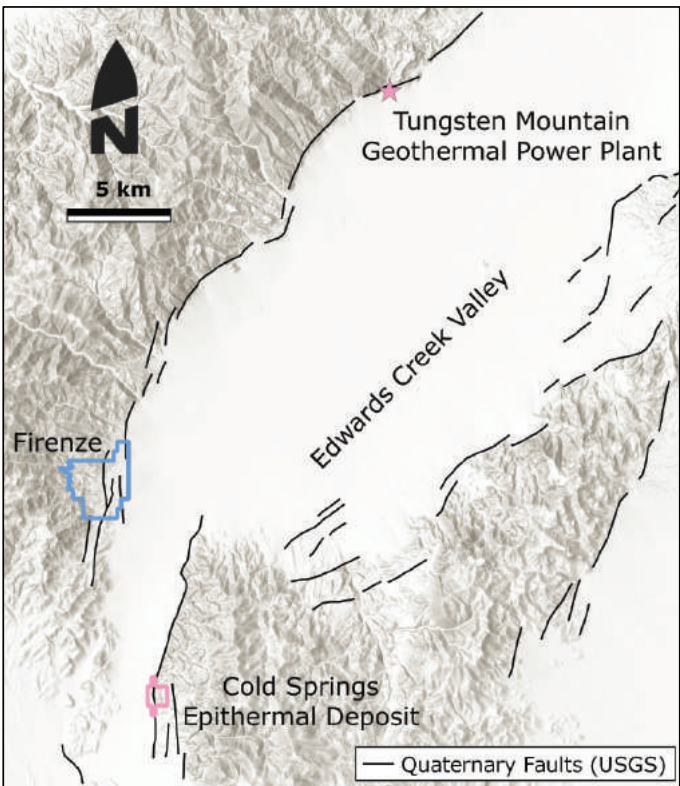
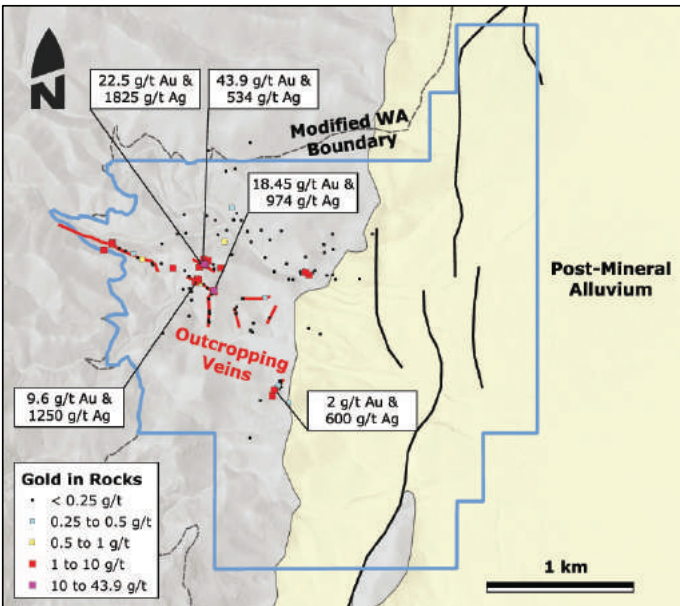
REGIONAL GEOLOGY

Located on the inside edge of an Oligocene caldera on the western margin of the Nevada Ignimbrite flare-up





SCHEMATIC X-SECTION LOOKING NORTH INDICATING THE HYPOTHESIZED TARGET AT FIRENZE



QUATERNARY FAULTS IN THE EDWARDS CREEK VALLEY

GEOLOGY AND GEOCHEMISTRY

- ▶ Firenze contains a system of outcropping precious metal rich epithermal veins
- ▶ Hosted in intracaldera Oligocene age variably welded rhyolitic tuff
- ▶ Grab samples from artisanal production in the 1860s returned up to 43.9 g/t Au with 534 g/t Ag, 22.5 g/t Au with 1825 g/t Ag and 17.7 g/t Au and 97.8 g/t Ag
- ▶ Veins are Oligocene in age related to proximal caldera activity

ALTERATION & VECTORING

- ▶ Exposed veins display alteration typical of the boiling zones of epithermal systems
- ▶ Poorly welded tuffs that hosts the veins locally silicified and argillized with anomalous precious metal values
- ▶ Alteration and gold bearing veins continue under shallow cover to the east towards caldera margin

TARGET CONCEPT

- ▶ Firenze is prospective for both undrilled high-grade vein shoots and disseminated gold systems developed within the tuffs in a blind untested structural zone under shallow alluvial cover to the east

This presentation includes certain statements that may be deemed "forward looking statements". Forward looking statements are statements that are not historical facts and are generally, but not always, identified by the words "expects", "plans", "anticipates", "believes", "intends", "estimates", "projects", "potential" and similar expressions, or that events or conditions "will", "would", "may", "could" or "should" occur.