

HIGHLIGHTS

CELTS

GOLD PROJECT

Silicon analogous steam heated alteration cell in the Walker Lane.

O R O G E N
orogenroyalties.com

THE OPPORTUNITY

- Untested advanced argillic alteration cell overlying possible low-sulfidation gold mineralization at depth
- Alteration indicative of steam heating implying a boiling zone
- Peripheral multi-gram gold with classic vein textures support the model define an eight square-kilometre district scale play
- Orogen envisions upward flaring gold zones at depth
- Surface expression analogous to AngloGold Ashanti's Silicon project (3.37 Moz gold inferred)

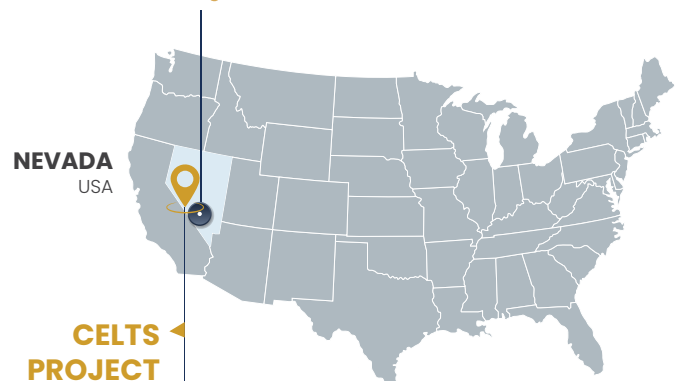
“**Celts is an underexplored opportunity and represents an undrilled Silicon-style target.**”



Dr. Laurence Pryer
VP Exploration

EXPANDED SILICON PROJECT

1% NSR with AngloGold Ashanti



NEVADA
USA

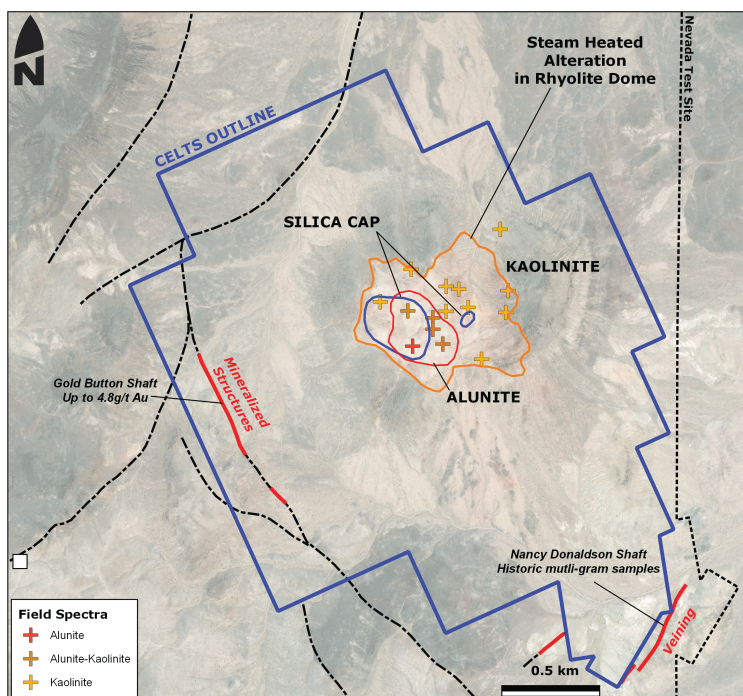
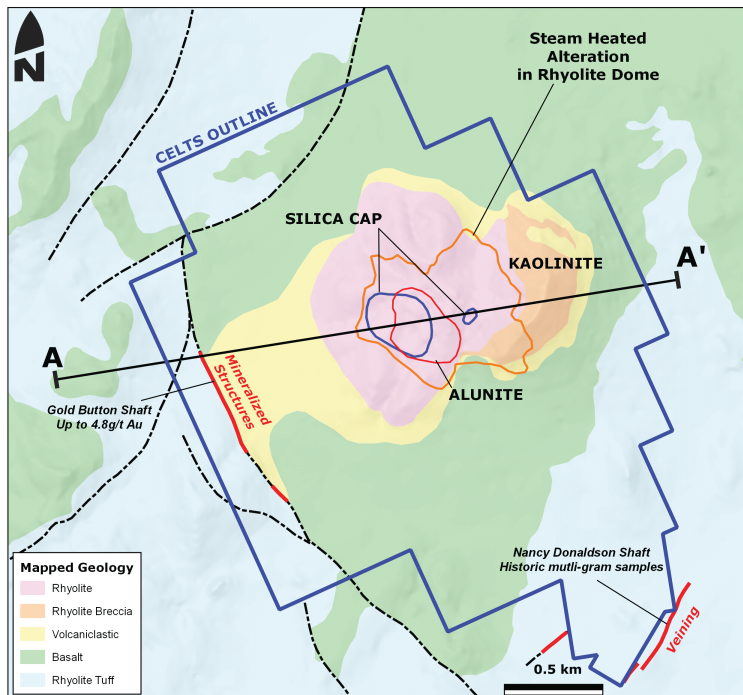
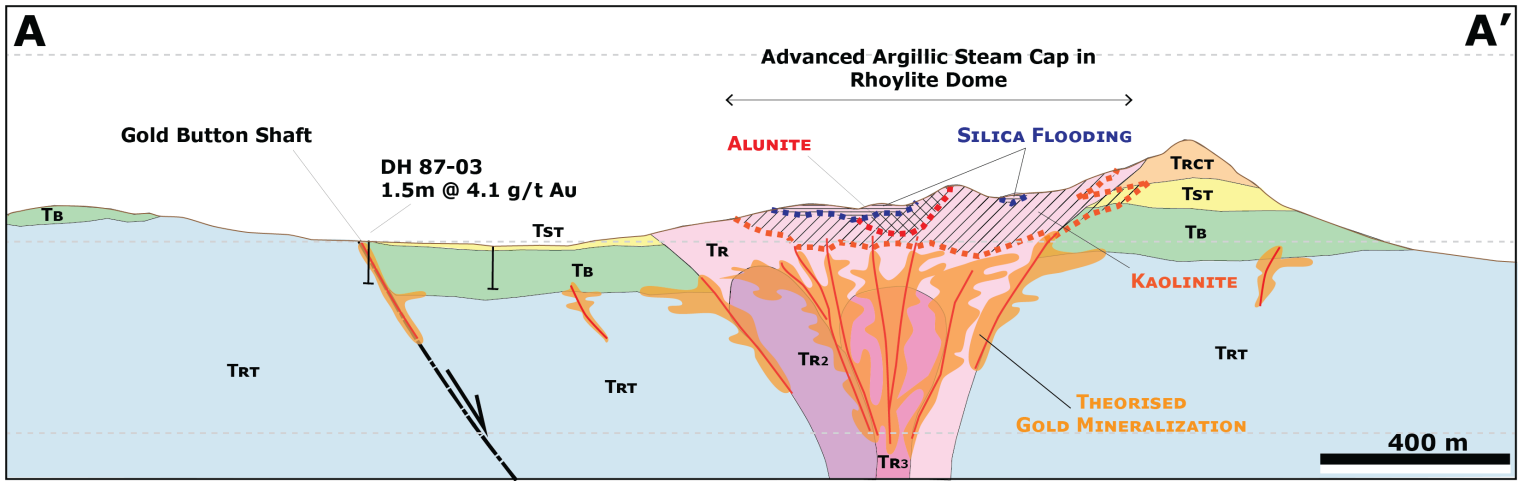
CELTS PROJECT

In Nevada, USA
100 km northwest of the Silicon Discovery and 13km northeast of the town of Goldfield.

REGIONAL GEOLOGY

Located in the Walker Lane trend, a 100 km wide northeast orientated structural corridor containing many Tertiary epithermal gold deposits.





GEOLOGICAL OVERVIEW

- ▶ Celts contains a central, Tertiary rhyolite dome
- ▶ Advanced argillic alteration within the dome constitutes a potential steam heated alteration cell
- ▶ Low sulfidation-style quartz veins with multi-gram gold values are peripheral to this cell
- ▶ Steam heated-cell may overlie a boiling zone comprising the untested core of gold mineralization
- ▶ Defines a eight square- kilometre district scale play

ALTERATION & GEOCHEMISTRY

- ▶ Over 600 metre diameter Aster anomaly corresponds with alunite and kaolinite alteration
- ▶ Zones of fine grained silica flooding
- ▶ Alteration vectors towards the south
- ▶ Anomalous mercury along the southern dome margin

TARGET CONCEPT

- ▶ Upward flaring gold zones at depth beneath the advanced argillic alteration, similar to those observed in many classical dome-hosted epithermal deposits

This presentation includes certain statements that may be deemed "forward looking statements". Forward looking statements are statements that are not historical facts and are generally, but not always, identified by the words "expects", "plans", "anticipates", "believes", "intends", "estimates", "projects", "potential" and similar expressions, or that events or conditions "will", "would", "may", "could" or "should" occur.